

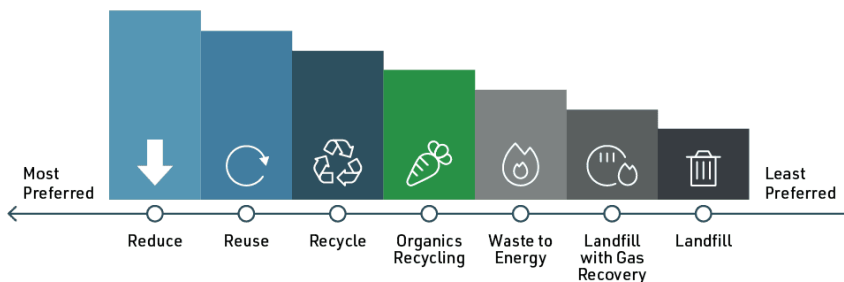


RAMSEY/WASHINGTON
RECYCLING & ENERGY

2024 ANNUAL REPORT

Ramsey/Washington Recycling & Energy (R&E) is the organization through which Ramsey and Washington counties collaborate to responsibly manage waste. Through R&E, the counties strive to protect health and the environment. R&E offers programs to help residents and businesses reduce waste and recycle better. R&E also owns and operates the R&E Center, which processes trash from the two counties to recover valuable materials and divert waste from landfills.

Through all its work, R&E's goal is to move materials up the waste hierarchy, pictured below, reducing waste and putting materials to their best use.



ADMINISTRATIVE

In 2024, R&E expanded its workforce by adding four new positions and hiring 19 staff, bringing its team to 101 employees, including both union-represented and non-represented staff. The organization transitioned to a new leadership model, welcoming Trista Martinson as its first executive director.



R&E BOARD 2024

Ramsey County Commissioners

- Victoria Reinhardt - *Vice Chair*
- Rafael E. Ortega
- Nicole Joy Frethem
- Mai Chong Xiong
- Mary Jo McGuire
- Rena Moran (Alternate)

Washington County Commissioners

- Fran Miron - *Chair*
- Karla Bigham - *Secretary/Treasurer*
- Stan Karwoski
- Michelle Clasen
- Gary Kriesel (Alternate)

Ex-Officio Members

- Tom Ingemann - City of Newport
- David J Benke - MPCA



Scan to read the full
2024 R&E Annual Report.

PROGRAM HIGHLIGHTS

R&E programs help businesses and residents reduce waste, increase reuse and expand recycling.



117 grants given through Bizrecycling



24 new communities eligible for the Food Scraps Pickup Program



4,300 tons of food recovered



12,500 mattresses recycled



128 tons of construction material recycled or reused



500 cubic yards of compost distributed



44% of VOC emissions reduced*



34 million people reached through communications campaigns



136 tours of the R&E Center

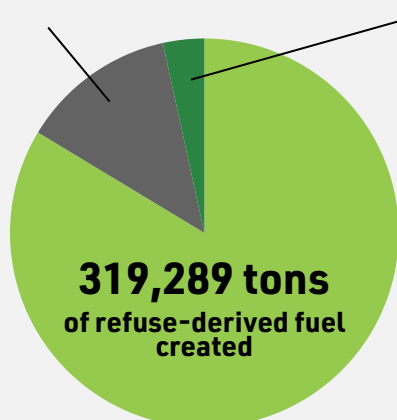
*From businesses that received Business Pollution Prevention grants.

WASTE PROCESSING

R&E partners with five transfer stations and over 80 haulers to process all trash from Ramsey and Washington counties, recovering recyclables like metals and food scraps and processing the rest into fuel for electricity.

IN 2024, THE R&E CENTER PROCESSED 389,705 TONS OF TRASH.

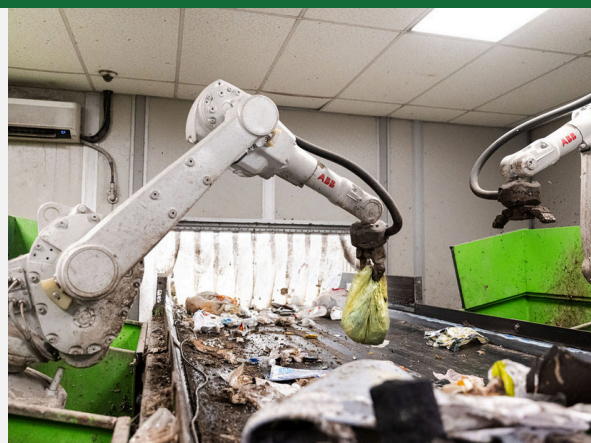
49,357 tons
send to landfills



13,092 tons

recovered for recycling,
including:

- 58 tons of food scraps
- 12,378 tons of metals
- 109 tons of appliances
- 58 tons of tires



IMPACT

Diverted **85%** of the trash at the R&E Center from landfills

Reduced CO₂ emissions by **99,892 metric tons**, compared to if the trash had been landfilled

Created enough fuel to power **12,787 homes** for a year